



Member of ASHE since 1972

MOSHE MATTERS

Quarterly Newsletter

September, 2013



PRESIDENT'S CORNER

Dan Mohrman
dpm7457@bjc.org

Wow! What a great MOSHE golf tournament!

Fred Waldrop and Martin Grabanski pulled out all the stops for this year's event. The course at Innsbrook was outstanding, the refreshments exceptional and the turnout the largest ever. General overall opinion was to return to Innsbrook in 2014.

Prior to the golfing, was an exceptional educational program presented by McCarthy Construction. A series of experts in the rebuilding of the Joplin Hospital shared their successes during the planning and construction phases.

Brad Taylor, MOSHE 2014 President elect and current Education Committee chair, was recognized and congratulated as being elected as the American Society of Healthcare Engineer's Board Region 8 representative, congratulation Brad!

Speaking of the Education committee, they have arranged the first MOSHE seminar for October 30, 2013, at the Forest Hills Country Club. George Mills with the Joint Commission, key note speaker, will update us on the Joint Commission future directions.

Following the update will be a diverse array of presentations via a two track venue on Facilities Management and Design and Construction. Attendance is limited and early registration is advised.

The Missouri Hospital Association Annual Convention and Trade Show offers an opportunity to hear speakers from across the country, who will share their outlook as to the future directions in Healthcare. The annual event scheduled at the Tan-Tar-A Resort at the Lake of the Ozarks on November 6th-8th will also present various opportunities for networking with individuals who represent diversity of healthcare related expertise. Don't forget to attend your chapter's "special" networking opportunity on Thursday afternoon by the lake.

Dan Mohrman, 2013 MOSHE President
Director, Facilities Engineering
Barnes-Jewish Hospital, St. Louis, Missouri

MOSHE is dedicated to improving the quality of healthcare in Missouri through the professional development of individuals in the supporting and allied fields.

MOSHE is composed of healthcare support personnel from the finest facilities all over the state of Missouri. With members statewide and numerous associate members, we are a concentrated membership of professionals supporting facilities and operations for the delivery of quality healthcare.

MOSHE COMMITTEES

ADVOCACY

Dan Mohrman, Chairman
dpm7457@bjc.org



Dan is continuing to visit hospital facilities throughout the State of Missouri to discuss the benefits of joining and being an active member in MOSHE

COMMUNICATIONS

Martin Grabanski, Chairman
MGrabanski@crmc.org



Martin continues working on the website; updating it with new photos as well as education programs. Martin and Peg continue to plan for 2014 as the Communication and Marketing Committees work together.

MEMBERSHIP

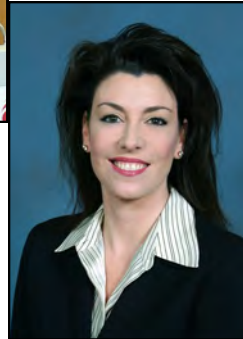
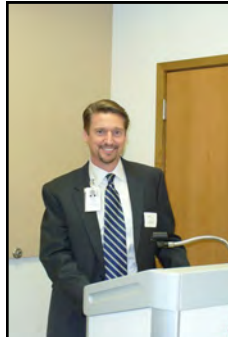
Peg Johnston



Peg is working with Dan and the Board to plan the direction of the Membership Committee for 2014. If you are interested in working with Peg on the committee, please contact her.

EDUCATION

Brad Taylor, Chairman
Brad.taylor@samcstl.org



Linda Marie Grawl, Co-Chair
LMGRAWL@zakcompanies.com

The October 30th one day seminar will start with George Mills, Joint Commission, as the keynote speaker; followed by 8 additional presentations. The event will be a great day for education and networking. The speakers for the November 7th education program at the MHA Annual Convention & Trade Show will be Joe Mynhier & Terry Thurston from BSA LifeStructures. They will be joined by panel members Dan Mohrman, Barnes-Jewish Hospital; Angie Warner, Mercy; and Don Wojtkowski, SSM Health Care to discussing the "Relationship of HCAHPS & Facilities and How to Improve Scores in new and existing Health Care Facilities. The year will wrap up with the annual happy hour in December. The committee is already planning the 2014 education calendar.

NOMINATING

Martin Grabanski, Chair



MGrabanski@crmc.org
The results of the MOSHE ballots for the 2014 President-Elect will be announced at the MOSHE Business Meeting at the MHA Annual Convention & Trade Show on November 7th prior to the education program. Martin is happy to report that Brad Taylor, 2013 Education Chair and President Elect was elected as the ASHE Region 8 Director. Congratulations to Brad for his commitment to MOSHE and ASHE.

GOLF

Martin Grabanski, Co-Chair
MGrabanski@crmc.org



Fred Waldrop, Co-Chair
fwaldrop@murphy-stl.com



The general consensus was the education program and golf outing held on September 23rd at Innsbrook Resort & Golf Center was one of the best. The weather was perfect and the course was beautiful. The golf committee will meet the end of November to start planning for next year's event.

SCHOLARSHIP

Mike Bock, Chairman
mike_bock@ssmhc.com



Mike would like to remind all of the members of the benefits of becoming more involved and taking a leadership role with MOSHE. With the Chapter receiving the ASHE Platinum Level of Chapter Affiliation, the Scholarship Committee will continue to hold a drawing for Facility members to attend the ASHE Annual Conference. In addition to attending education programs, eligibility requires the facility member to participate in a leadership role by serving as a Chair or Co-Chair on one of the MOSHE Committees. Please contact Mike for more information.

2013 EDUCATION PROGRAM / GOLF OUTING

Thanks to everyone that contributed to a great day and event!

TEAM SPONSORS



Alberici
 Barnes-Jewish Hospital
 Brickman Group
 Brown Smith Wallace
 Christner
 Code Consultants, Inc.
 Crothall Healthcare
 Environmental Engineering

Guarantee Electrical
 Heideman, a Zak Company
 Henneman Engineering
 J.E. Dunn
 KJWW Engineering
 Landco Construction
 Lawrence Group
 Legrand North America
 McCarthy
 McGrath & Associates
 MedTek Resources, Inc.
 Meyer Electric



Murphy
 Murray Company
 PART LLC
 Ross & Baruzzini
 Schindler Elevator
 SCI Engineering Inc.
 SM Wilson
 Steamatic of St. Louis
 Tarlton
 Tech Electronics
 Zak Companies

FUNCTION SPONSORS

Bar Sponsor after Golf

Guarantee Electrical / MedTek / Murphy



Beverage Snack Tents

BSA LifeStructures
 Brickman Group /
 Feeler Scheer Architects
 Interior Investments of St. Louis
 Wellington Environmental

Drinks on Course

McGrath & Associates /
 Tech Electronics



Prizes

Hilti North America



TEE SPONSORS

Alberici
 APCO Signs
 Automatic Controls Equipment
 Brickman Group



Brown Smith Wallace
 Henneman Engineering
 InPro Corporation
 KJWW
 Landco Construction
 McCarthy
 McGrath & Associates

Mercy
 Murphy
 Murray Company
 Northstar Management
 PART LLC
 Ross Baruzzini
 Steamatic of St. Louis
 Tarlton
 Tech Electronics



And..... the fun continues !!!!

Attendance prizes

Alberici
Brickman Group
Christner
Feeler Scheer Architects
Guarantee Electrical
InPro Corporation
KJWW
Landco Construction
McCarthy
Murphy
Ross & Baruzzini



GOLF COMMITTEE

Martin Grabanski, Capital Regional Medical Center, Co-Chair
Fred Waldrop, Murphy Company, Co-Chair

Committee Members:

Don Brown, Guarantee Electrical
Sandy Ellis, APCO Sign System
Tom Gary, Brickman Group
Jamie Gensits, McGrath & Associates
Shari Gentsch, Tech Electronics
Armand Harpin, KJWW Engineering
Larry Kirchhoff, MedTek
Virginia Pankey, Christner
Janet Shirrell, Feeler Scheer Architects,

VOLUNTEERS

Lisa Bell-Reim, Oculus
Sandy Ellis, APCO Sign System
Ginny Feeler, Zak Companies
Sam Hanebrink, Zak Companies
Peg Johnston, CK Power
Michelle Lebbing, E.J. Welch
Keith Mosley, Hannibal Regional
Virginia Pankey, Christner
Julia Pluff, BRiC
Joyce Ruiz
Janet Shirrell, Feeler Scheer Architects
Lindsay Stephens, Feeler Scheer Architects



Thanks to our August Education Program Sponsors!

